

CERT Organization



CERT Basic Training Unit 6

Unit Objectives

- Describe the CERT structure
- Identify how CERTs interrelate with ICS
- Explain documentation requirements

Unit Topics

- CERT Organization
- Mobilization
- Documentation



Principles of Onscene Management

- Maintain the safety of disaster workers
- Provide clear leadership and organizational structure
- Improve effectiveness of rescue efforts

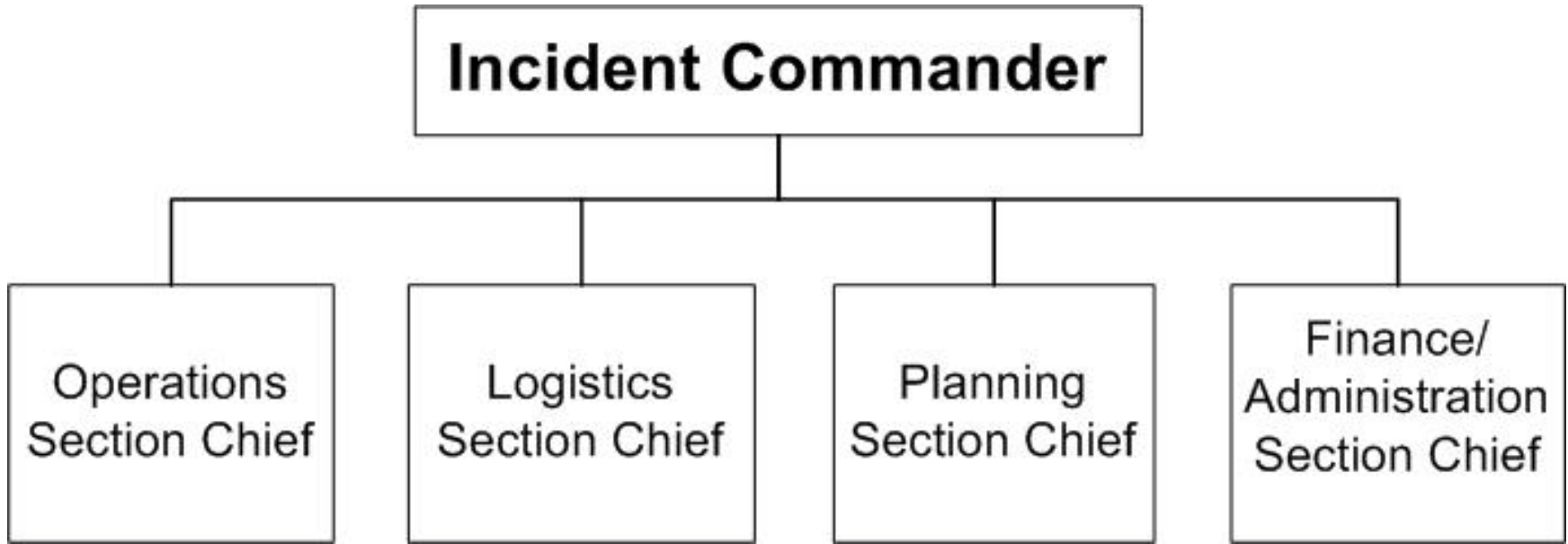
CERT Onscene Management

- Well-defined management structure
- Manageable span of control
- Common terminology
- Effective communication
- Consolidated action plans
- Comprehensive resource management
- Accountability

Objectives for On-Scene Management

1. Identify scope of incident
2. Determine overall strategy
3. Deploy resources
4. Document actions and results

Incident Command System



CERT Operations

- Command structure
- CERT Incident Commander/Team Leader (IC/TL)
- Command Post
- Expanded structure as needed

Dealing with the Media

- Refer media inquiries to CERT IC/TL
- Do not let media inhibit CERT goals
- Be careful about information released



NIMS Compliance

- Ability to work together
- IS-100.a:
Introduction to ICS
- IS-700.b:
Introduction to NIMS
- <http://training.fema.gov/IS/NIMS.asp>



CERT Mobilization

- CERTs take care of themselves, their families, their homes, their neighbors
- Proceed to predesignated staging area
- IC/TL is established, organizes the group
- IC/TL prioritizes actions
- Organization is flexible and evolves based on new information

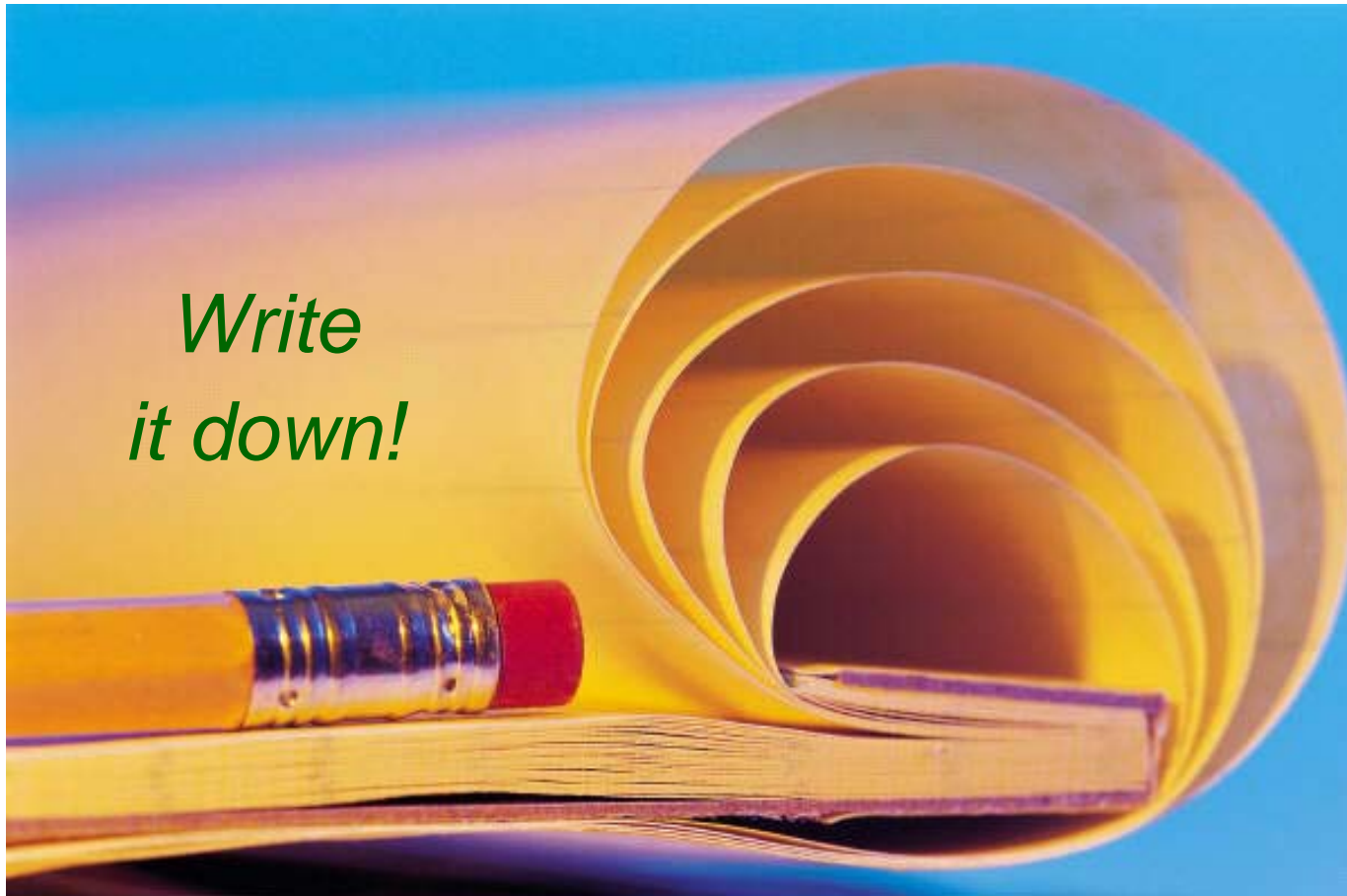
Rescuer Safety

- Rescuer safety is first priority
- Heavy damage = No rescue
- Moderate damage = Locate, triage, evacuate
- Light damage = Locate, triage, continue sizeup, and document

Documentation

- Section Chiefs
 - Provide Command Post with information
- Command Post
 - Documents situation status
 - Incident locations
 - Access routes
 - Identified hazards
 - Support locations

Documentation



Documentation Forms

- Damage Assessment
- Personnel Resources Sign-In
- Incident/Assignment Tracking Log
- Briefing Assignment
- Victim Treatment Area Record
- Communications Log
- Equipment Inventory
- General Message

Documentation Flow

Command Post



Incident/
Assignment
Tracking Log



FEMA

CERT Basic Training
Unit 6: CERT Organization

6-15



Documentation Flow

**Arriving
CERT volunteers**



Command Post



Staging/Logistics



Documentation Flow



Documentation Flow



Documentation Flow



Unit Summary

- ICS provides flexible means of organization
- “Is it safe to attempt the rescue?”
- Document and communicate information to all CERT levels
- Provide Command Post with ongoing information about damage assessment, group status, and needs
- Command Post documents and tracks situation status

Homework Assignment

1. Read unit to be covered in next session
2. Bring necessary supplies to next session
3. Wear appropriate clothes to next session